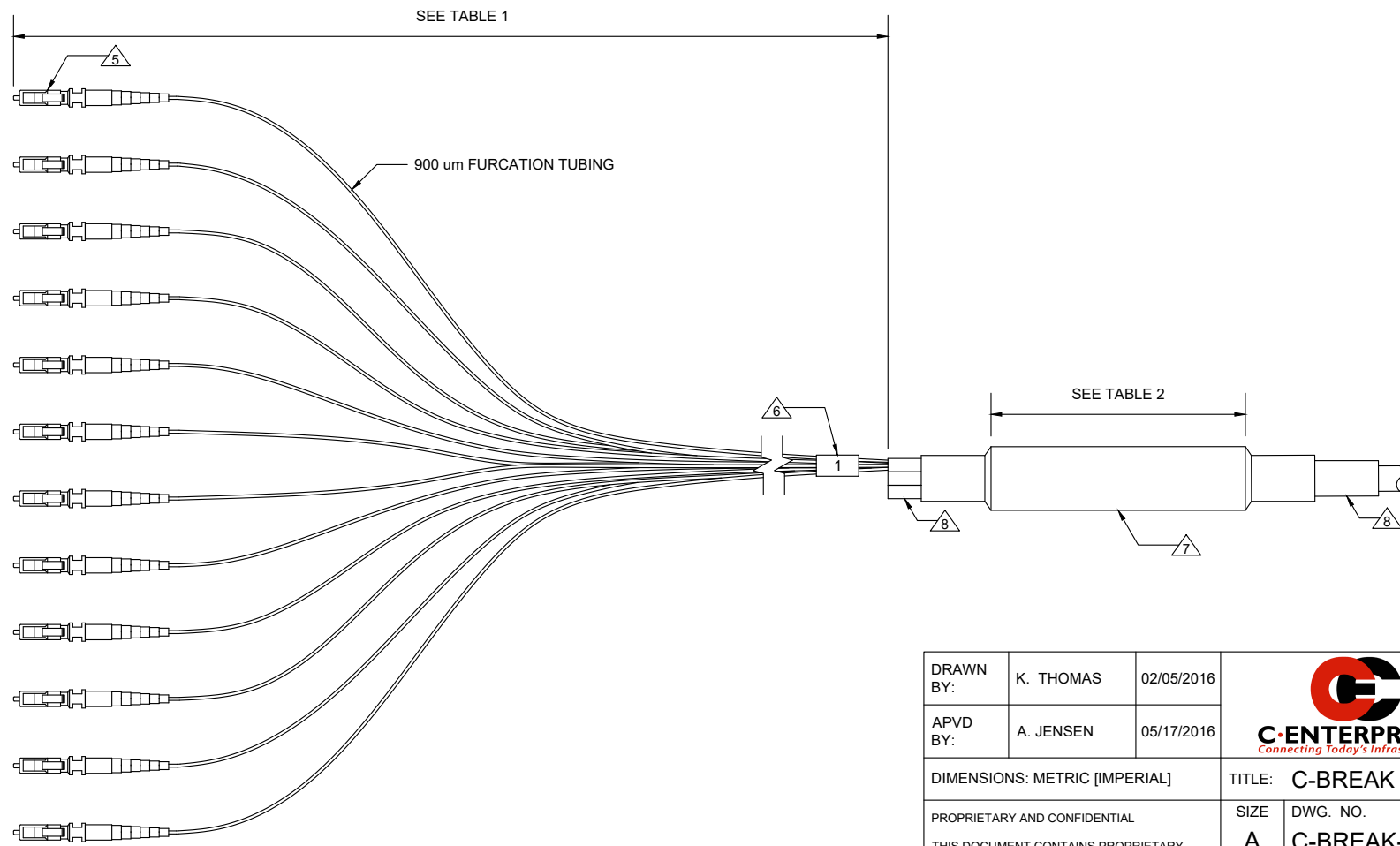


NOTES: UNLESS OTHERWISE SPECIFIED

1. C-BREAK 900: 900 um BREAKOUT.
 - 1.1. SINGLE KNUCKLE BREAKOUT WITH SUBGROUPS OF 12 FIBERS IN 900 um FURCATION TUBES.
2. C ENTERPRISES ENGINEERING STANDARDS APPLY.
3. WHEN PULLING EYE REQUESTED, CONNECTORS AND SUBUNITS WILL BE STAGGERED BY DEFAULT.
 - 3.1. REFER TO STANDARDS AND C-PULLING-EYE DRAWINGS FOR DETAILS.
4. 12 CONNECTORS / 1 SUBGROUP SHOWN DUE TO SPACE CONSTRAINTS.
5. LC CONNECTOR SHOWN FOR REFERENCE ONLY.
6. LABEL LEG NUMBER.
7. C-BREAK. SEE TABLE 3 FOR OVERALL DIAMETER.
8. HEAT SHRINK FOR STRAIN RELIEF.

REV	ECR	DESCRIPTION	BY	DATE	CHECKED
A	-	INITIAL RELEASE	J.C.	06/23/2011	-
B	-	DRAWING UPDATE & FORMAT CHANGE. BLOCK UPDATE.	K.T.	05/17/2016	A.J.



12 in
18 in
24 in [DEFAULT]
36 in
48 in
1 M
CUSTOM

250 um COATED FIBERS	
LENGTH	FIBER COUNT
1-1/2 in	2-4
2 in	6-12
3 in	16-36
4 in	48+

FIBERS	900 um
2-12	DIMENSIONED BEST FIT
16	7/8 in
24	7/8 in
36	7/8 in
48	7/8 in
72	7/8 in
96	1-1/8 in
144	1-1/8 in

DRAWN BY:	K. THOMAS	02/05/2016
APVD BY:	A. JENSEN	05/17/2016



C ENTERPRISES
2445 CADES WAY
VISTA CA 92081
760-599-5111

DIMENSIONS: METRIC [IMPERIAL]		TITLE: C-BREAK 900 um BREAKOUT VER 2	
PROPRIETARY AND CONFIDENTIAL	SIZE A	DWG. NO. C-BREAK-900-VER2	REV B
THIS DOCUMENT CONTAINS PROPRIETARY INFORMATION OF C ENTERPRISES. NOT TO BE USED, COPIED, OR DISCLOSED WITHOUT WRITTEN PERMISSION. ALL RIGHTS RESERVED.		SCALE: 1 TO 2	SHEET 1 OF 1